



3 Blythe Close, Enham Alamein, Andover, SP11 6HX
Guide Price £375,000



3 Blythe Close, Enham Alamein Andover, Guide Price £375,000

PROPERTY DESCRIPTION BY Mr Dion McArthur

Welcome to Blythe Close, a charming townhouse nestled in the picturesque village of Enham Alamein, Andover. This recently redecorated property boasts a perfect blend of modern amenities and village charm.

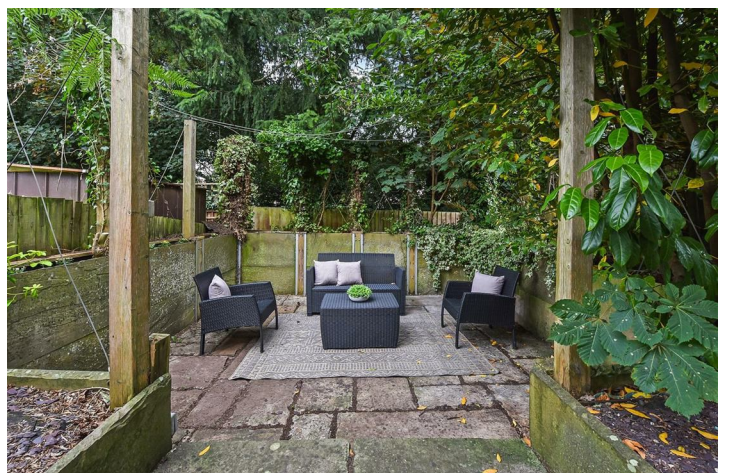
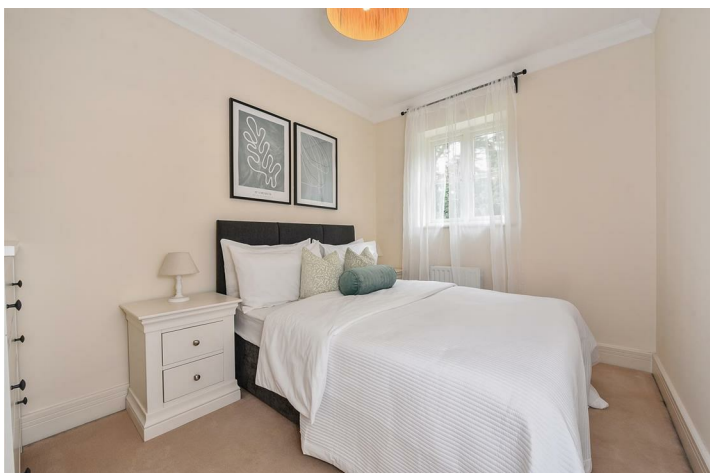
As you step inside, you are greeted by an entrance hall with doors into the kitchen, cloakroom WC and spacious reception room, ideal for entertaining guests or relaxing with your family. The home benefits from four bedrooms, including three doubles, with an en suite in one of the rooms, there is ample space for everyone to enjoy their own private sanctuary. The two bathrooms ensure convenience and comfort for all residents.

One of the highlights of this property is the garage and parking, a rare find in village locations. Say goodbye to the hassle of searching for parking with this convenient feature.

The top floor is extremely versatile, being large enough to be a large bedroom/reception room with study space with the capability of adding an en suite. Being able to shut off from the rest of the house, this would make a great guest bedroom, cinema or play room.

Located in a tranquil village setting, Blythe Close offers a peaceful retreat from the hustle and bustle of a busy life. Whether you're looking to enjoy a leisurely stroll through the village, and local woods, or simply relax in your own private oasis, this property provides the perfect backdrop for a serene lifestyle.

Don't miss out on this opportunity to own a beautiful townhouse with no onward chain. Contact us today to arrange a viewing and make this dream property your new home.





The leafy village of Enham Alamein nestles with the rolling hills of the Hampshire just under three miles north of historic Andover, now the principal town within the Test Valley Borough.

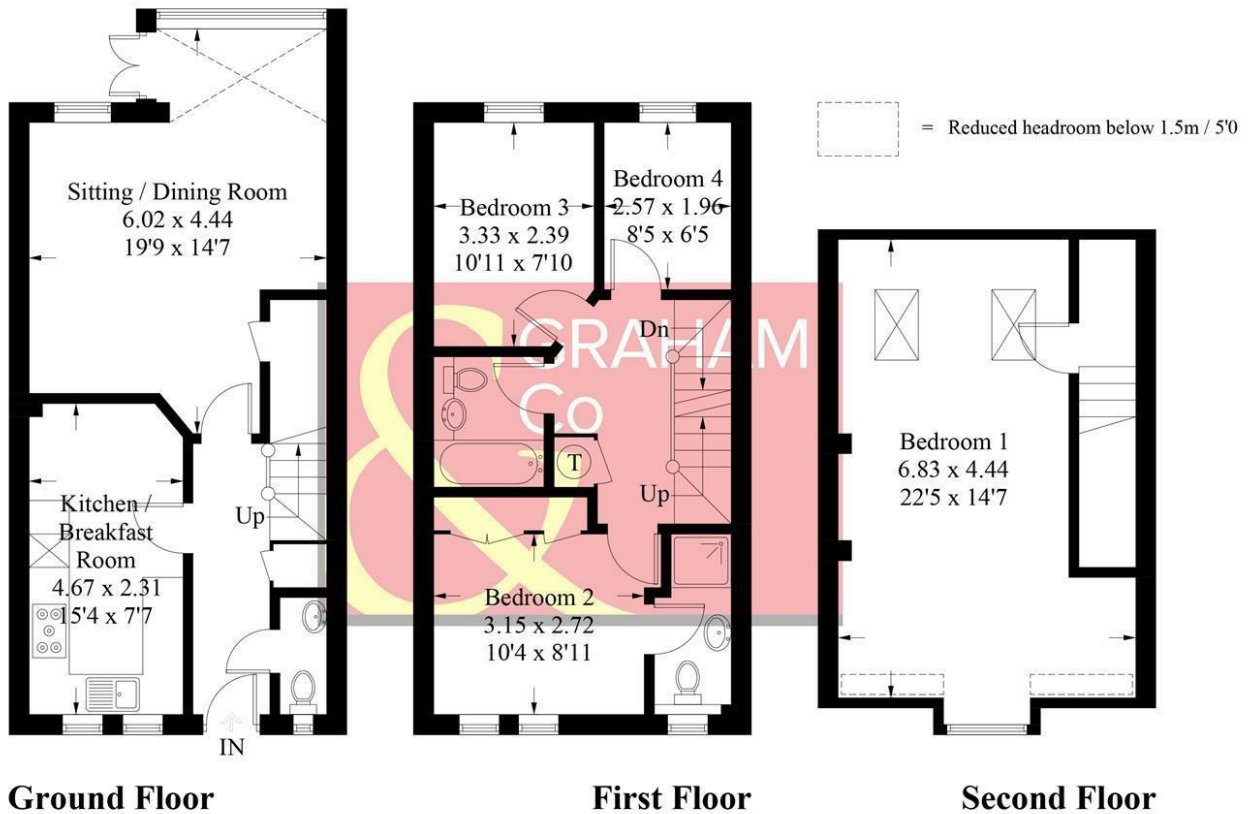
Given the name Alamein after the World War II when the village of Enham received a substantial contribution from the grateful people of Egypt, the village church, St. George's is now internationally regarded as the memorial church for the battle of El-Alamein

Enham Chase was well designed with a high level of detail in not only the layout but attention to the materials used having taken inspiration from the traditional properties found within the county. Residents enjoy the mature trees and open green spacious that the development offers along with a footpath and cycle path allow access for the village residents to the play area and neighbouring woodland.



Blythe Close, Enham Alamein, Andover, SP11

Approximate Gross Internal Area = 113.6 sq m / 1223 sq ft



PRODUCED FOR GRAHAM AND CO

Whilst every attempt has been made to ensure the accuracy of the floorplan, measurements of doors, windows and rooms are approximate. These plans are for representation purposes only as defined by RICS Code of Measuring Practice and used as such by any prospective purchaser. © Emzo Marketing (ID571712)

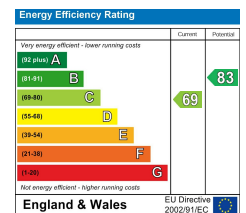
MORTGAGE ADVICE

Across The Market Mortgages

An independent Mortgage brokerage offering expert advice from across the whole market. Whether you are a first-time buyer, home mover, remortgaging or buying a Buy-To-Let investment. Tristan can provide expert & reliable advice, in a clear jargon free language. Book a free consultation today.

E - tristan@atmmortgages.com M - 07545320380

www.atmmortgages.com



Tax Band: E



OPEN 7 DAYS

If you are considering selling your home please contact us today for your free no obligation valuation

01264 356500

IMPORTANT: we would like to inform prospective purchasers that these sales particulars have been prepared as a general guide only. A detailed survey has not been carried out, nor the services, appliances and fittings tested. Room sizes should not be relied upon for furnishing purposes and are approximate. If floor plans are included, they are for guidance only and illustration purposes only and may not be to scale. If there are any important matters likely to affect your decision to buy, please contact us before viewing the property.